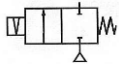


Media: slight acid – alkali - water – vacuum 10<sup>-6</sup> torr  
 Pressure range: 0 to 3.5 Bar max  
 Media temperature: +150°C max  
 Ambient temperature: -10°C to +60°C max  
 Media viscosity: 50 centistokes max  
 Mounting: coil upright  
 Opening Closing time: 150 mSec Max



LATCHING

# 2/2 Stainless

## 3/8 – 2"

### LATCHING

### 2 WAY ZERO RATED

### 0 – 3.5 Bar

## TYPE LADS



#### PRESSURE

Ø Port BSP	Ø Orifice (mm)	Flow Kv Ltr/Min	Pressure Rating (Bar)		Seals	Max Media Temp °C	Part Number
			Min	Max			
3/8	15	64.4	0	3.5	FKM EPDM NBR Silicone	120 120 100 120	LADS14V + voltage LADS14E + voltage LADS14N + voltage LADS14S + voltage
1/2	15	64.4	0	3.5	FKM EPDM NBR Silicone	120 120 100 120	LADS15V + voltage LADS15E + voltage LADS15N + voltage LADS15S + voltage
3/4	20	133	0	3.5	FKM EPDM NBR Silicone	120 120 100 120	LADS20V + voltage LADS20E + voltage LADS20N + voltage LADS20S + voltage
1	25	188.8	0	3.5	FKM EPDM NBR Silicone	120 120 100 120	LADS25V + voltage LADS25E + voltage LADS25N + voltage LADS25S + voltage
1 1/4	35	371.8	0	3.5	FKM EPDM NBR Silicone	120 120 100 120	LADS35V + voltage LADS35E + voltage LADS35N + voltage LADS35S + voltage
1 1/2	35	400	0	3.5	FKM EPDM NBR Silicone	120 120 100 120	LADS40V + voltage LADS40E + voltage LADS40N + voltage LADS40S + voltage
2	50	686.4	0	2.5	FKM EPDM NBR Silicone	120 120 100 120	LADS50V + voltage LADS50E + voltage LADS50N + voltage LADS50S + voltage

#### OPTIONS

IP67 UL approved Coil & IP65 LED Connector PG11 – DIN 43650 A  
 NPT, BSPT Thread  
 Manual Override (Base entry T bar)  
 \* VST, Neoprene, ECO, HNBR or Hypalon Seals  
 Other custom-made options available upon request

#### ELECTRICAL DATA

Voltage (-10% + 10%) Continuous duty 100%		Coil	Power Consumption	Insulation class	Enclosure	Electrical connections
=	12 – 24 (DC)	WPG2	18 Watts	H 180°C	IP 65 with connector	3 spades DIN 43650 DIN 40050 VDE 0110

#### CONSTRUCTION

Body: 316 stainless steel (CF8M)  
 Tube and Spring: 304 Stainless, Armature: 430F Stainless, Other internal parts: Stainless, Shading ring: without  
 Seals and gaskets: FKM (Optional EPDM, NBR, Silicone, VST, Neoprene, ECO, HNBR and Hypalon)  
 Moulded coil: Resin

#### REPAIR KIT

Diaphragm	SP + valve part number - DIAPHRAGM
Coil	WPG2 + voltage (DC Only)
Armature	SP + valve part number + ARMATURE

#### OVERALL DIMENSIONS

No.	Part No	Description
1	SP201*	Nut
2	SP202*	Washer
3	SP203*	Nameplate
5	WPG2*	Coil
6	SP206*	Gasket
7	SP207*	Connector
8	SP208*	Core Tube
9	SP209*	Valve Bonnet
10	SP210*	Bolt
11	SP211*	Bonnet O Ring
12	SP212*	Armature Assembly
13	SP213*	Diaphragm Base Kit
14	SP214*	Diaphragm Base
15	SP215*	Diaphragm
16	SP216*	Base O Ring
17	SP217*	Valve Body

\* = Valve Part Number



Model	LADS15	LADS20	LADS25	LADS35/40	LADS50
A	75	85	100	120	150
B	103	114	120	140	160
C	52	60	70	90	122
Kg	1.06	1.24	1.51	2.87	4.81

