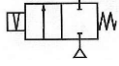


Media: slight acid – alkali – air – water
 Pressure range: 0.5 to 10 Bar max
 Media temperature: +5°C to 80°C
 Ambient temperature: +5°C to +60°C
 Media viscosity: 50 centistokes max
 Mounting: coil upright



LATCHING

2/2 Delrin

3/8 – 1 1/2

LATCHING

2 WAY SERVO ASSISTED

0.5 – 10 Bar

TYPE LPA



PRESSURE

Ø Port BSP	Ø Orifice (mm)	Flow Kv Ltr/Min	Pressure Rating (Bar) ΔP		Seals	Max Media Temp. °C	Part Number
			Min	Max			
3/8	15	64.4	0.5	10	FKM EPDM NBR	80	LPA14V + voltage LPA14E + voltage LPA14N + voltage
1/2	15	64.4	0.5	10	FKM EPDM NBR	80	LPA15V + voltage LPA15E + voltage LPA15N + voltage
3/4	20	133	0.5	10	FKM EPDM NBR	80	LPA20V + voltage LPA20E + voltage LPA20N + voltage
1	25	188.8	0.5	10	FKM EPDM NBR	80	LPA25V + voltage LPA25E + voltage LPA25N + voltage
1 1/4	35	371.8	0.5	10	FKM EPDM NBR	80	LPA35V + voltage LPA35E + voltage LPA35N + voltage
1 1/2	35	371.8	0.5	10	FKM EPDM NBR	80	LPA40V + voltage LPA40E + voltage LPA40N + voltage

OPTIONS

IP67 UL + CSA Approved coil & IP65 LED Connector PG11 – DIN 43650 A
 * VST, Neoprene, Silicone, ECO, HNBR or Hypalon Seals
 Other custom-made options available upon request

ELECTRICAL DATA

Voltage (-10% + 10%) Continuous duty 100%		Coil	Power Consumption	Insulation class	Enclosure	Electrical connections
=	12 - 24 (DC)	WPG1	12 Watts	H 180°C	IP 65 with connector	3 Spades DIN 43650 DIN 40050 VDE 0110

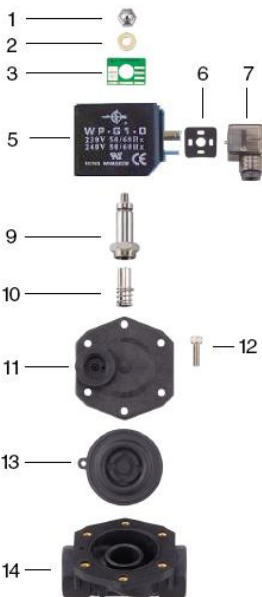
CONSTRUCTION

Body: Poly-acetate
 Tube and Spring: 304 Stainless, Armature: 430F Stainless, Other internal parts: Stainless, Shading Ring none
 Moulded coil: Resin

REPAIR KIT

Diaphragm	SP213 + Valve Part number
Coil	WPG1 + voltage (DC Only)

OVERALL DIMENSIONS



No	Reference	Description
1	SP201-*	Nut
2	SP202-*	Washer
3	SP203-*	Name Plate
5	WPG1	Coil
6	SP206-*	Gasket
7	SP207-*	Connector
9	SP209-*	Core Tube
10	SP201-*	Armature
11	SP211-*	Valve Bonnet
12	SP212-*	Bolts
13	SP213-*	Diaphragm
14	SP214-*	Valve Body

Model	A	B	C	D	E	F	Kg
LPA14	73.5	48	105	35	55	3/8	0.32
LPA15	73.5	48	105	35	55	1/2	0.32
LPA20	104	90	124	35	55	3/4	0.65
LPA25	104	90	124	35	55	1	0.6
LPA35	132	120	145	35	55	1 1/4	0.85
LPA40	132	120	145	35	55	1 1/2	0.8

