

Media: air – water – gas – oil
 Pressure range: 0 to 63 Bar max
 Media temp: -20°C to +80°C max
 Ambient temp: -20°C to +70°C
 Mounting: Any position
 Cycles: 20,000
 Opening/Closing: 10-20 Sec
 Duty cycle: 75% (min 1 min stop between cycles for cooling)

Actuated St.St. Ball Valve

1/4 – 4”
 Open-Close, Failsafe or Modulating
 ISO5211 2 WAY DIRECT
 0 – 63 Bar
TYPE CNX-3S



PRESSURE

Ø Port BSPT	Orifice (mm)	Actuator	Min (Bar)	Max at Ambient Temp (Bar)	Part Number
1/4	15	CNX20	0	63	CNX20-3S02 + voltage
3/8	15	CNX20	0	63	CNX20-3S03 + voltage
1/2	15	CNX20	0	63	CNX20-3S04 + voltage
3/4	20	CNX20	0	63	CNX20-3S06 + voltage
1	25	CNX20	0	63	CNX20-3S08 + voltage
1 1/4	32	CNX60	0	63	CNX60-3S12 + voltage
1 1/2	40	CNX60	0	63	CNX60-3S14 + voltage
2	50	CNX60	0	63	CNX60-3S20 + voltage
2 1/2	65	CNX60	0	63	CNX60-3S24 + voltage
3	80	CNX110	0	63	CNX110-3S28 + voltage
4	100	CNX110	0	63	CNX110-3S32 + voltage

OPTIONS

Basic actuator, Visual Position Indicator, Manual Over Ride, 2x volt free open + closed contact feedback cam adjustable switches
 Anti-condensation heater (ACH)
 Aluminium cover (ALC)
 Relay output alarm (RO) in case of motor failure or torque exceeded
 Failsafe return (power off valve automatically returns to start position) 15NM Max (FSC closed or FSO open 24vdc, 110vAC or 230vAC)
 Smart actuator, additional LED & button control for over-ride, dead band; speed control, closed position & reverse acting adjustments

CNX20 Smart

Smart actuator (S)
 Modulating 4-20mA (M)
 Wireless (W)
 Modbus (MB)
 High speed actuator 24VDC only HS

CNX60 Smart

Smart actuator (S)
 Modulating 4-20mA (M)
 Wireless (W)
 Modbus (MB)
 High speed actuator 24VDC (HS)

CNX110 Smart

Smart actuator (S)
 Modulating 4-20mA (M)
 Wireless (W)
 Modbus (MB)
 High speed actuator 24VDC (HS)

TECHNICAL DATA

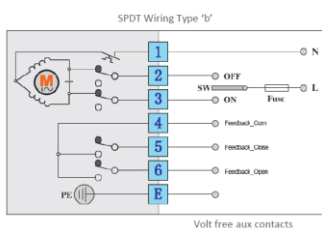
CNX	Rated Voltage	Voltage Range (Volts)	Torque (NM)		Power Consumption				Run time (Sec)
			Max Break	Working	Run Watts	Hold Watts	Max Current	Fuse (Amp)	
20	DC24	22 – 28	20	15	9.6	0.3	500mA for 5ms	2	10
20	AC24	22 – 28	20	15	10.8	0	450mA for 5 ms	2	15
20	AC110	90 – 130	20	15	15	0	135mA for 5 ms	1	
20	AC230	190 – 250	20	15	13.2	0	60mA for 5 ms	1	
60	DC24	21.6-26.4	60	60	36	1.5	2.5 for 5ms	4	
60	AC24	22-28	60	60	50	0	2.5 for 5ms	10	
60	AC110	90-130	60	60	55	0	0.6 for 5ms	5	
60	AC230	190-250	60	60	55	0	0.3A for 5ms	2	
110	DC24	21.6-26.4	110	110	36	1.5	2.5 for 5ms	4	
110	AC24	22-28	110	110	50	0	2.5 for 5ms	10	
110	AC110	90-130	110	110	55	0	0.6 for 5ms	5	
110	AC230	190-250	110	110	55	0	0.3 for 5ms	2	

CONSTRUCTION

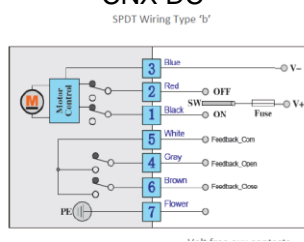
Valve Body: full flow 3 piece stainless steel 1.4408, ball stainless steel 1.4408, seals Viton, seats RPTFE, stem 316 stainless
 CNX Actuator: ABS Engineering Plastic

WIRING

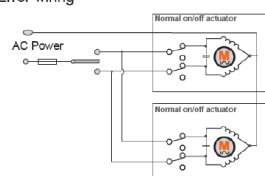
CNX AC



CNX DC



❌ Error wiring



✅ Right wiring

