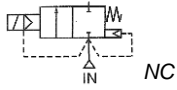


Media: air – water – light oil - steam  
 Pressure range: 0.5 to 20 Bar max  
 Media temperature: +200°C Max  
 Ambient temperature: -40° to +60°C  
 Media viscosity: 50 centistokes max  
 Mounting: coil upright  
 Opening / Closing 200 mSec Max



# 2/2 Steam

## 3/8 - 2

### NORMALLY CLOSED

### 2 WAY SERVO ASSISTED

## 0.5 – 20 Bar

# TYPE SA



### PRESSURE

Ø Port BSP	Ø Orifice (mm)	Flow Kv Ltr/ min	Pressure Rating (Bar) Max ΔP			Part Number
			Min	Steam	Air/ Water	
3/8	15	64.4	0.5	12	20	SA14 + voltage
1/2	15	64.4	0.5	12	20	SA15 + voltage
3/4	20	133	0.5	12	20	SA20 + voltage
1	25	188.8	0.5	12	20	SA25 + voltage
1 1/4	35	371.8	0.5	12	20	SA35 + voltage
1 1/2	35	371.8	0.5	12	20	SA40 + voltage
2	50	686.4	0.5	12	20	SA50 + voltage

### OPTIONS

IP67 (EN60529:1991+A1:2000) UL + CSA Approved Coil & IP65 LED Connector DIN43650A PG11  
 NPT Thread  
 ATEX EExmIT4 II 2G & 2D IP65 T130°C 10 Bar Max (20 Bar is special option)  
 WPA3C IP54 coil with 30cm flying leads  
 Manual Override circuit  
 Stainless Steel Body, High Pressure, Flanged, normally open and other custom-made options available upon request

**Included**

### ELECTRICAL DATA

Voltage (-10% + 10%) Continuous Duty 100%	Coil	Power Consumption		Insulation class	Enclosure	Electrical connections
		Inrush	Holding			
~ 24 - 110 - 230 (50/ 60 Hz) DIN	WPG2	18.7VA	15.3VA	H 180°C	IP 65 with connector	3 spades DIN 43650 DIN 40050 VDE0110
= 12 – 24 (DC)		18 Watts				
~ 24 - 110 - 230 (50 60 Hz)	WPA3C	88VA	48 - 67VA			
= 12 – 24 (DC)		22 Watts			IP54	30cm lead wires

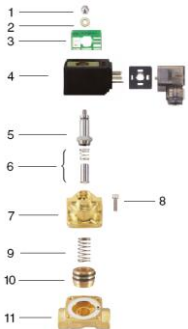
### CONSTRUCTION

Body: Brass, Tube and Spring: 304 Stainless Armature: 430F Stainless Other internal parts: Stainless steel  
 Seals and gaskets: PTFE, Moulded coil: Resin

### REPAIR KIT

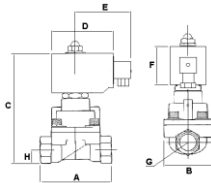
Coil	Coil type (WPG2 or WPA3C) + voltage
Piston	SP210 + Valve Part Number

### OVERALL DIMENSIONS

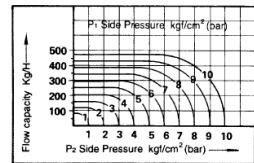


No.	Part Ref	Description
1	SP201-*	Nut
2	SP202-*	Washer
3	SP203-*	Nameplate
4	WPG2	Coil
5	SP205-*	Core Tube
6	SP206-*	Armature
7	SP207-*	Valve Bonnet
8	SP208-*	Screw
9	SP209-*	Spring
10	SP210-*	Piston
11	SP211-*	Valve Body

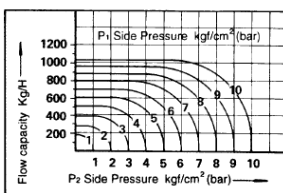
Model	A	B	C	D	E	F	G	H	Kg
SA14	75	52	129	67	52	42	3/8	14.5	1.13
SA15	75	52	129	67	52	42	1/2	14.5	1.1
SA20	85	60	141	67	52	42	3/4	18	1.53
SA25	100	70	148	67	52	42	1	23	1.85
SA35	120	90	168	52	45	41	1 1/4	33	3.3
SA40	120	90	168	52	45	41	1 1/2	33	3.25
SA50	150	120	203	52	45	41	2	40.5	6.8



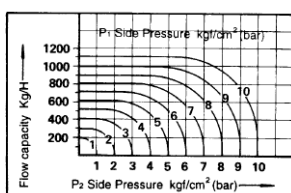
● Fluid: Steam SA-14.15



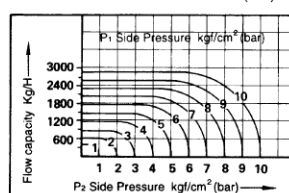
● Fluid: Steam SA-20



● Fluid: Steam SA-25(AF)



● Fluid: Steam SA-35.40(AF)



● Fluid: Steam SA-50(AF)

