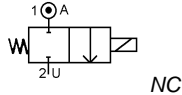


Media: air – water – gas – light oil - vacuum 10⁻⁶ torr
 Pressure range: 0 to 150 Bar max
 Media temperature: 180°C max
 Ambient temperature: -10°C to +50°C max
 Media viscosity: 50 centistokes max
 Mounting: any position
 Opening / Closing time: 20 mSec Max



2/2 Brass

1/8

NORMALLY CLOSED 2 WAY DIRECT ACTING

0 – 150 Bar

TYPE AD6000



PRESSURE

| Ø Port BSP | Ø Orifice (mm) | Coil | Flow Kv Ltr/min | Pressure Rating (Bar) ΔP | | | Seals | Part Number |
|------------|----------------|-------|-----------------|--------------------------|--------|--------|--|-------------------------|
| | | | | Min | Max AC | Max DC | | |
| 1/8 | 1.2 | WPG1 | 1.0 | 0 | 60 | 42 | NBR +100°C Max | AD6012 + seal + voltage |
| | 1.6 | | 1.3 | 0 | 40 | 28 | | AD6016 + seal + voltage |
| | 2.0 | | 1.6 | 0 | 20 | 14 | | AD6020 + seal + voltage |
| | 1.2 | WPG2 | 1.0 | 0 | 120 | 84 | Silicone EPDM FKM +120°C Max | AD6112 + seal + voltage |
| | 1.6 | | 1.3 | 0 | 60 | 42 | | AD6116 + seal + voltage |
| | 2.0 | | 1.6 | 0 | 30 | 21 | | AD6120 + seal + voltage |
| | 3.0 | | 3.7 | 0 | 20 | 14 | | AD6130 + seal + voltage |
| | 4.0 | | 8.3 | 0 | 12 | 8.4 | | AD6140 + seal + voltage |
| | 5.0 | | 9.2 | 0 | 10 | 7 | | AD6150 + seal + voltage |
| | 1.2 | WPA3C | 1.0 | 0 | 150 | 105 | *VST +180°C Max (all 30 Bar Max) | AD6212 + seal + voltage |
| | 1.6 | | 1.3 | 0 | 80 | 56 | | AD6216 + seal + voltage |
| | 2.0 | | 1.6 | 0 | 60 | 42 | | AD6220 + seal + voltage |
| | 3.0 | | 3.7 | 0 | 40 | 28 | | AD6230 + seal + voltage |
| | 4.0 | | 8.3 | 0 | 20 | 14 | | AD6240 + seal + voltage |
| | 5.0 | | 9.2 | 0 | 15 | 10.5 | | AD6250 + seal + voltage |

OPTIONS

IP67 (EN60529:1991+A1:2000) UL + CSA Approved Coil & IP65 LED Connector PG11 – DIN 43650 A (Except WPA3C coil IP54)
 ATEX EExmIT4 II 2G & 2D IP65 T130°C (WPG1 Pressure same, WPG2 70% of DC rating, WPA3C not available)
 * PTFE, VST, Neoprene, ECO, HNBR or Hypalon Seals
 Silver shading ring (ADxxS)
 Manual Override
 NPT Thread
 Other custom-made options available upon request

Included

ELECTRICAL DATA

| Voltage (-10% + 15%) Continuous duty 100% | Coil | Power Consumption | | Insulation class | Enclosure | Electrical connections |
|--|-------|-------------------|-----------|------------------|----------------------------|---|
| | | Inrush | Holding | | | |
| ~ 24 - 110 - 230 (50 or 60 Hz) | WPG1 | 11.2VA | 8.2VA | H 180°C | IP 65 with connector | 3 spades DIN 43650A DIN 40050 VDE 0110 |
| = 12 - 24 (DC) | | 12 Watts | | | | |
| ~ 24 - 110 - 230 (50 or 60 Hz) | WPG2 | 18.7VA | 15.3VA | | | |
| = 12 - 24 (DC) | | 18 Watts | | | | |
| ~ 24 - 110 - 230 (50 or 60 Hz) | WPA3C | 88VA | 48 - 67VA | | IP54 | 30 cm flying lead wires |
| = 12 - 24 (DC) | | 22 Watts | | | | |

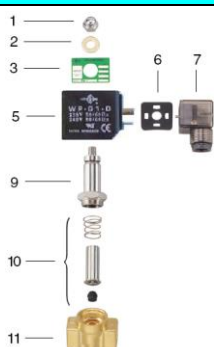
CONSTRUCTION

Body: Brass
 Tube and Spring: 304 Stainless/ Brass Armature: 430F Stainless Other internal parts: Brass
 Shading ring: copper (optional Silver)
 Seals and gaskets: FKM (Optional EPDM, NBR, Silicone, PTFE, VST, Neoprene, ECO, HNBR, Hypalon, Butyl IIR)
 Moulded coil: Resin

REPAIR KIT

| | |
|-----------------|---|
| Coil | Coil size (WPG1 or WPG2 or WPA3C) + voltage |
| Armature + seal | SP210 + Valve Part Number |

OVERALL DIMENSIONS



| Item | Part No | Description |
|------|---------|-------------------|
| 1 | SP201-* | Nut |
| 2 | SP202-* | Washer |
| 3 | SP203-* | Nameplate |
| 5 | SP205-* | Coil |
| 6 | SP206-* | Gasket |
| 7 | SP207-* | Connector |
| 9 | SP209-* | Core Tube |
| 10 | SP210-* | Armature Assembly |
| 17 | SP211-* | Valve Body |

* = Valve Part Number

| Model | A | B | C | F* | G | H | Kg |
|-----------|----|----|----|----|----|------|------|
| 6012-6020 | 41 | 19 | 85 | 63 | 15 | 10.5 | 0.47 |
| 6112-6150 | 41 | 19 | 88 | 65 | 15 | 10.5 | 0.66 |
| 6212-6250 | 41 | 19 | 94 | 47 | 15 | 10.5 | 0.66 |

