

# 4-inch UPVC Valve

## Specification

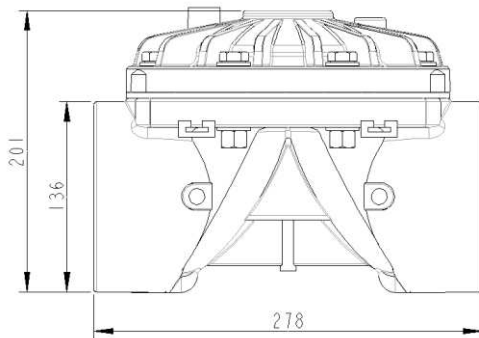
|                 |                 |
|-----------------|-----------------|
| Port Size       | 4-inch, DN100   |
| Port Connection | Solvent Welding |
| Body Material   | UPVC            |

## Operation Data

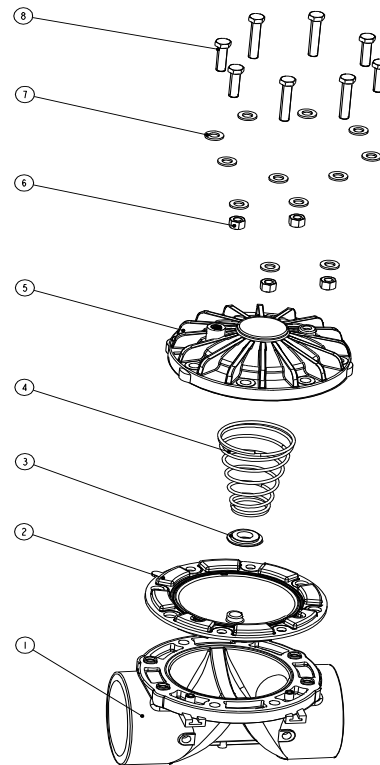
|                       |                   |      |
|-----------------------|-------------------|------|
| Max. Flow Range       | m <sup>3</sup> /h | 160  |
|                       | gal/min(US)       | 700  |
| Max. Working Pressure | bar               | 10   |
|                       | psi               | 145  |
| Min. Pressure         | bar               | 0.69 |
|                       | psi               | 10   |
| Max. Temperature      | °C                | 40   |
|                       | °F                | 104  |



## Dimensions (in millimetre)



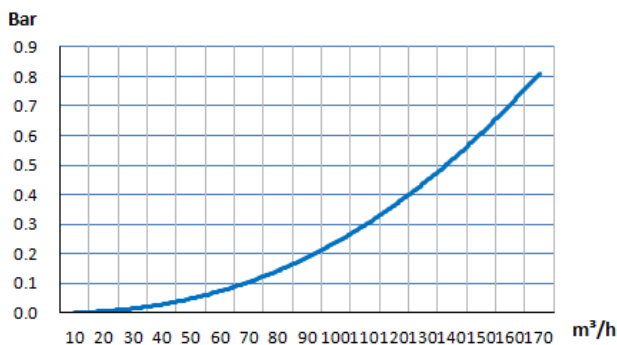
## Components



## Product Uses

- Irrigation systems (Field Valves)
- Underground irrigation systems
- Sewage systems
- Water supply systems
- Municipal water systems
- Agriculture
- Landscaping
- Green Houses
- Filtration
- Sprinkler systems

## Head Loss Chart: 3-way Electric Valve



<< Relationship between Flow and Head Loss >>

Horizontal Axis  $Q$  : Flow rate, 1m<sup>3</sup>/h=4.4gpm(US)=3.67gpm(UK);

Vertical Axis  $\Delta H$  : Head loss, 1Bar=14.5Psi=0.1mwc.

| No. | Parts         | Material  |
|-----|---------------|-----------|
| 1   | Valve Body    | UPVC      |
| 2   | Diaphragm     | NR        |
| 3   | Spring Seat   | POM       |
| 4   | Spring        | 304 SST   |
| 5   | Valve Bonnet  | PA66      |
| 6   | Nuts x 8      | #45 Steel |
| 7   | Washers x 8   | #45 Steel |
| 8   | M12 Bolts x 8 | #45 Steel |

Connexion Developments Ltd

Unit 3 Rainbow Court, Armstrong Way, Yate, Bristol, BS37 5NG, England  
 Tel: 0800 808 7799 Int: +44 1454 334950 Fax: 0850 808 7700 Int: +44 (0) 1454 325390  
 Company Registered: 03502257 VAT No: 712906644  
 sales@solenoid-valves.com www.solenoid-valve.world